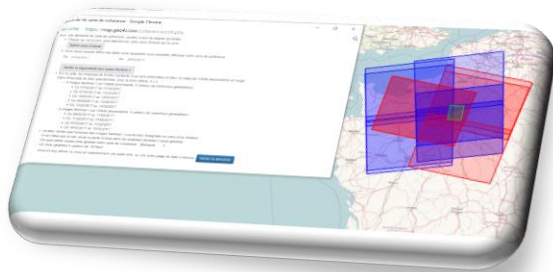


In order to meet internal needs, Geo4i has developed a **full automatic tool** of generation of coherence map with radar imagery.

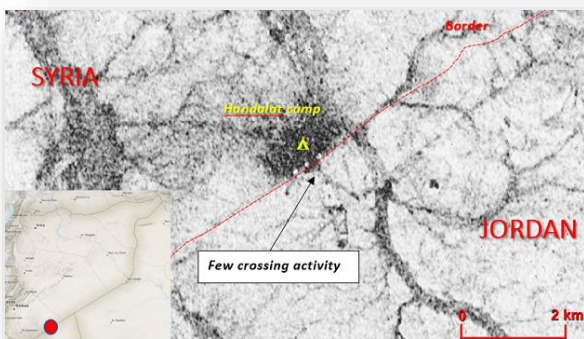
Assisted request



➤ Select an area of interest and a time interval.
The system will :

- ❖ **Check** interferometric radar imagery availability
- ❖ **Classify** the number of coherence map which can be generate by time interval and by orbit
- Fully operational with **Sentinel-1** data (Copernicus)
- Can be adapted to the **Cosmo-SkyMed** and **TerraSar X** constellations
- Process can be planned for a period

Applications



- Refugees monitoring
- border monitoring
- Troop movements
- Detection / evolution of anthropic structures
- Damage assessment

