

Thanks to its expertise in imagery and geospatial analysis, Geo4i has developed for its own needs an **innovative geospatial platform**

Platform4i



Integration of **Copernicus** data!



Quickly **integrate, display and analyze** useful information for the production of geospatial activity.



Specifics **data models**

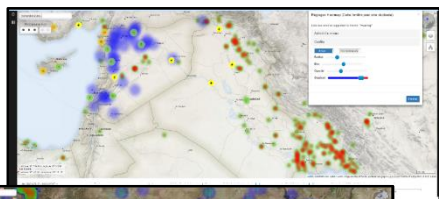


Integrated **automatic processing chains** to **optimize** analytical work

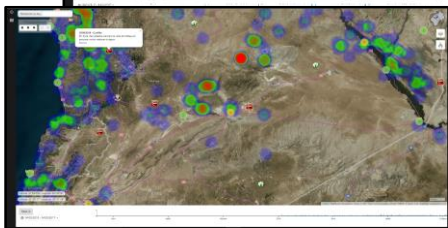
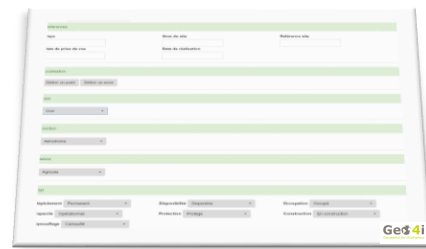


Quick and ergonomic information input

Data integration and visualization

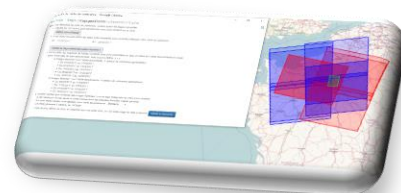


- Geocoder
- Raster and vector integration
- Data model
- Input information guide
- Update heatmap / density map on the fly
- Visualization of information in **space and time**



Innovative processing

- Basic image processing, transparency control
- Launch of automatic images processing chains (Detection of activity, soil evolution...)



Online service offer (analyzes, processing, monitoring platform, ...)

Integration of your data

On-site deployment on request