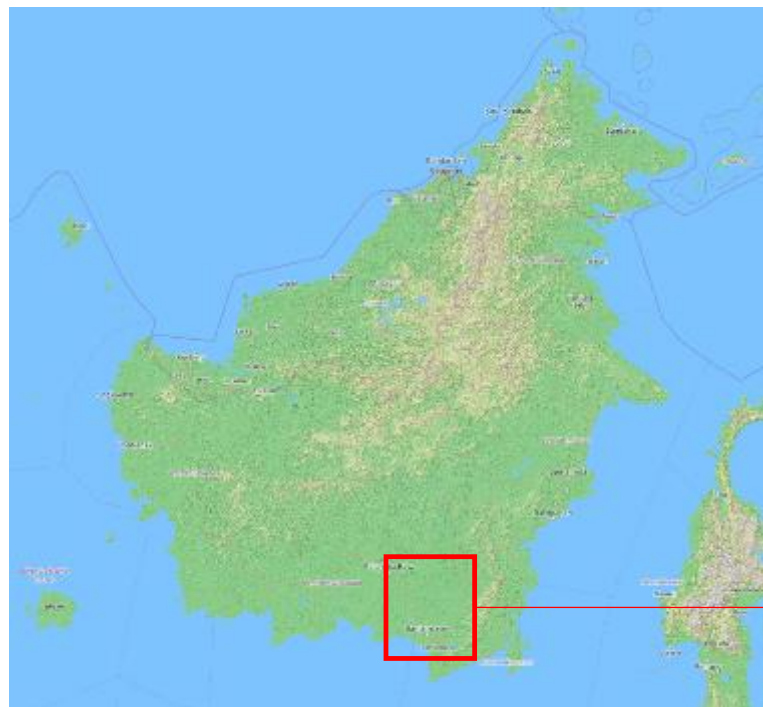


Forest fire evolution / BORNEO

Borneo Map



Active fire plot extracted thanks to automatic workflow integrated in **GeoSpace** platform



Image sources ouvertes

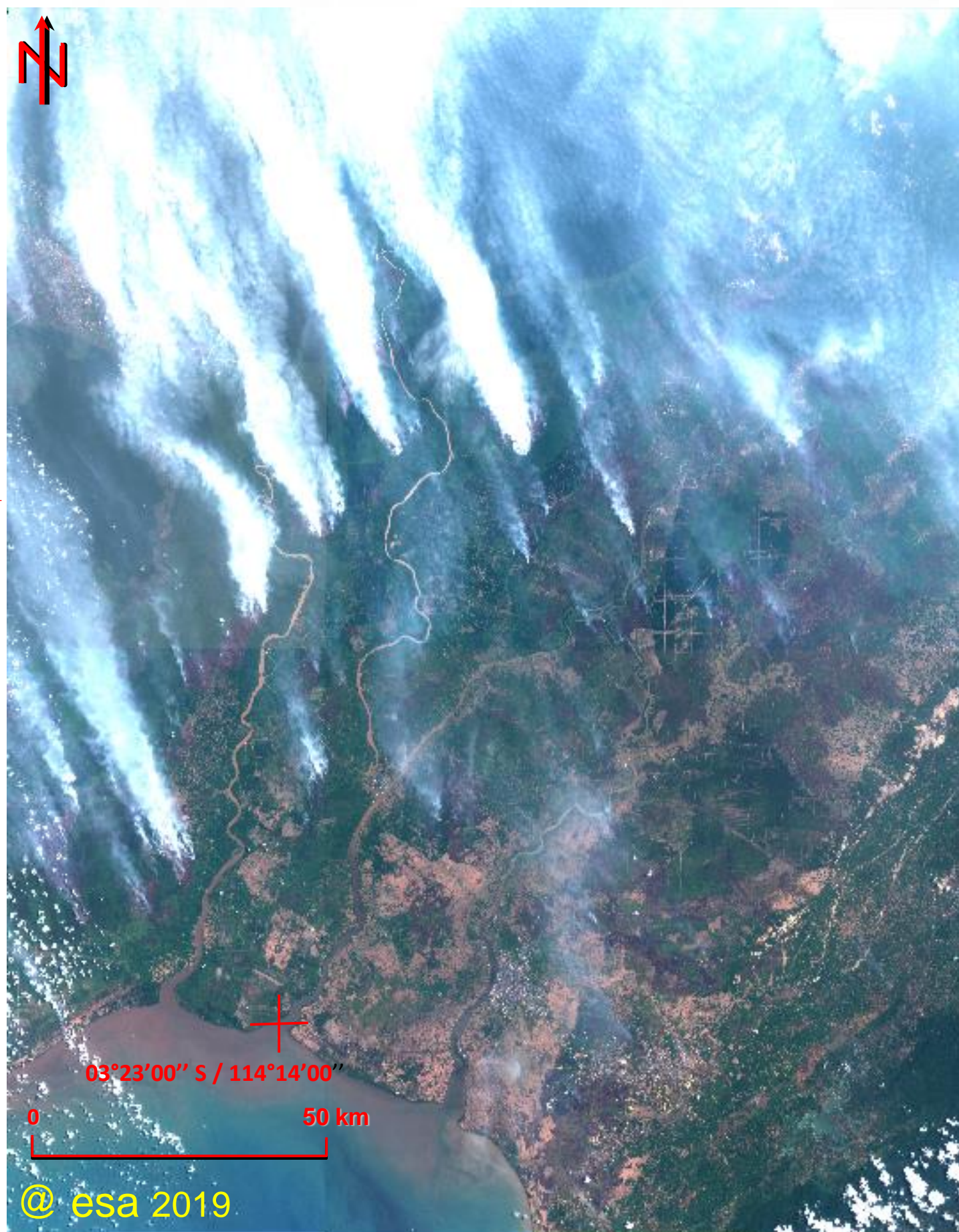
<https://www.parismatch.com>



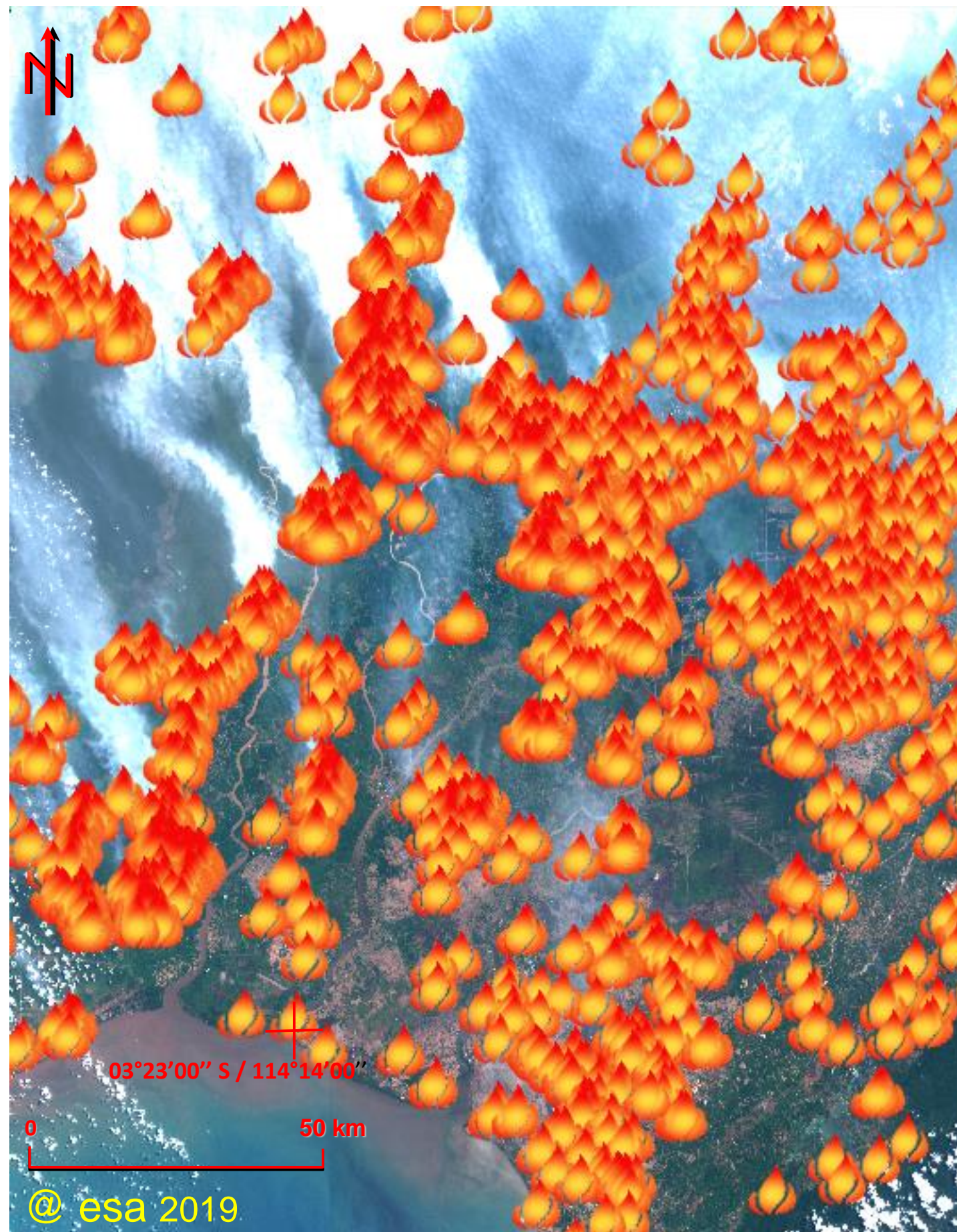
Image sources ouvertes

<http://www.borneonaturefoundation.org>

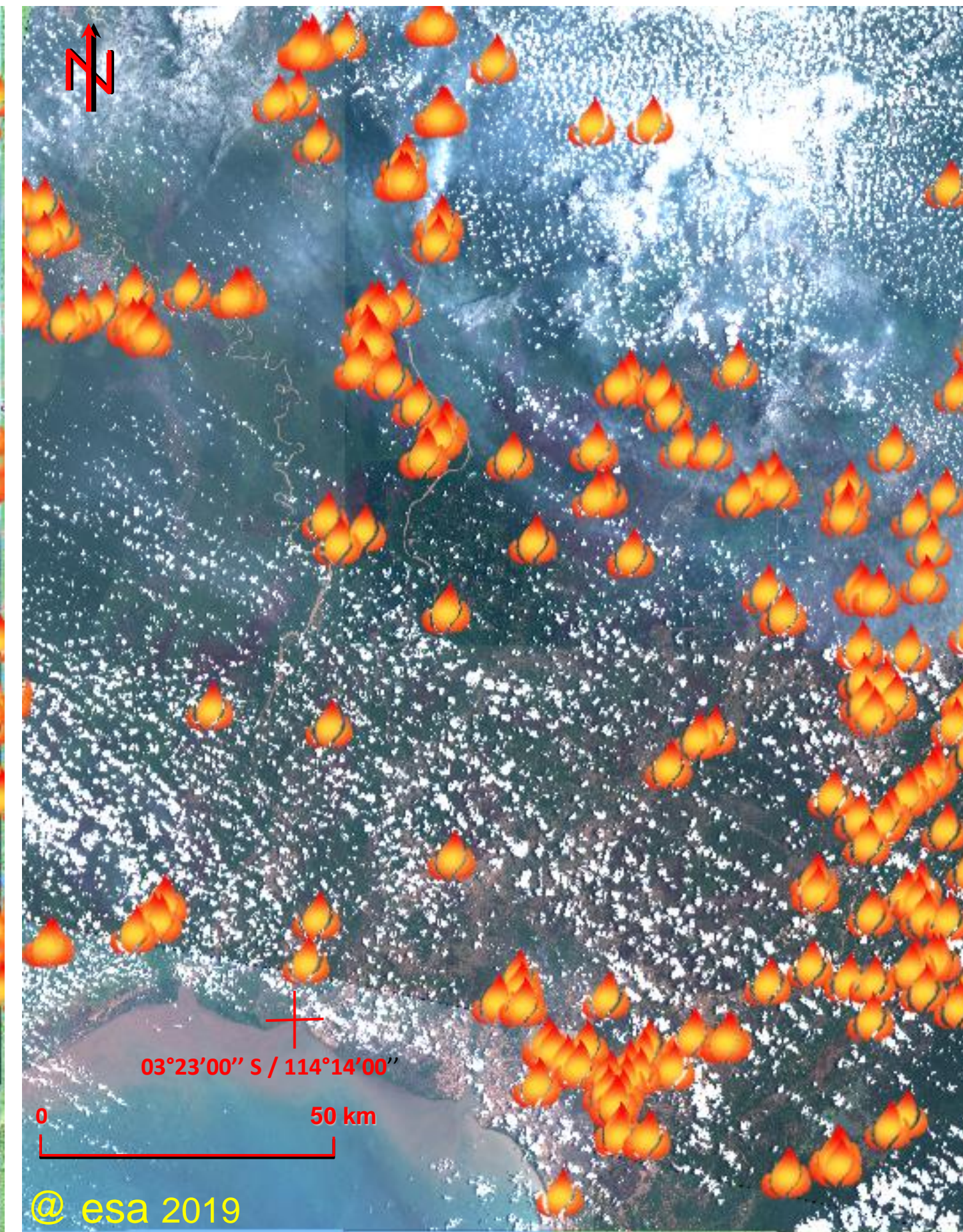
SENTINEL 2A images at 09/13/2019



SENTINEL 2A images at 09/13/2019



SENTINEL 2A images at 09/28/2019



Forest fire evolution / BORNEO

Borneo island is facing the worst forest fire since a lot of years. Automatic workflow, integrated into GeoSpace Platform, allows to monitor fire evolution.

Detection is based on Sentinel 2 images. We can remark a significant decrease of active fire in the second half of September.