

# Fires near Chernobyl nuclear power plant

Fires ravaged the Chernobyl region in recent days. Geo4i used its active fire processing chain to assess the impacted areas and look in the vicinity of the nuclear power plant.

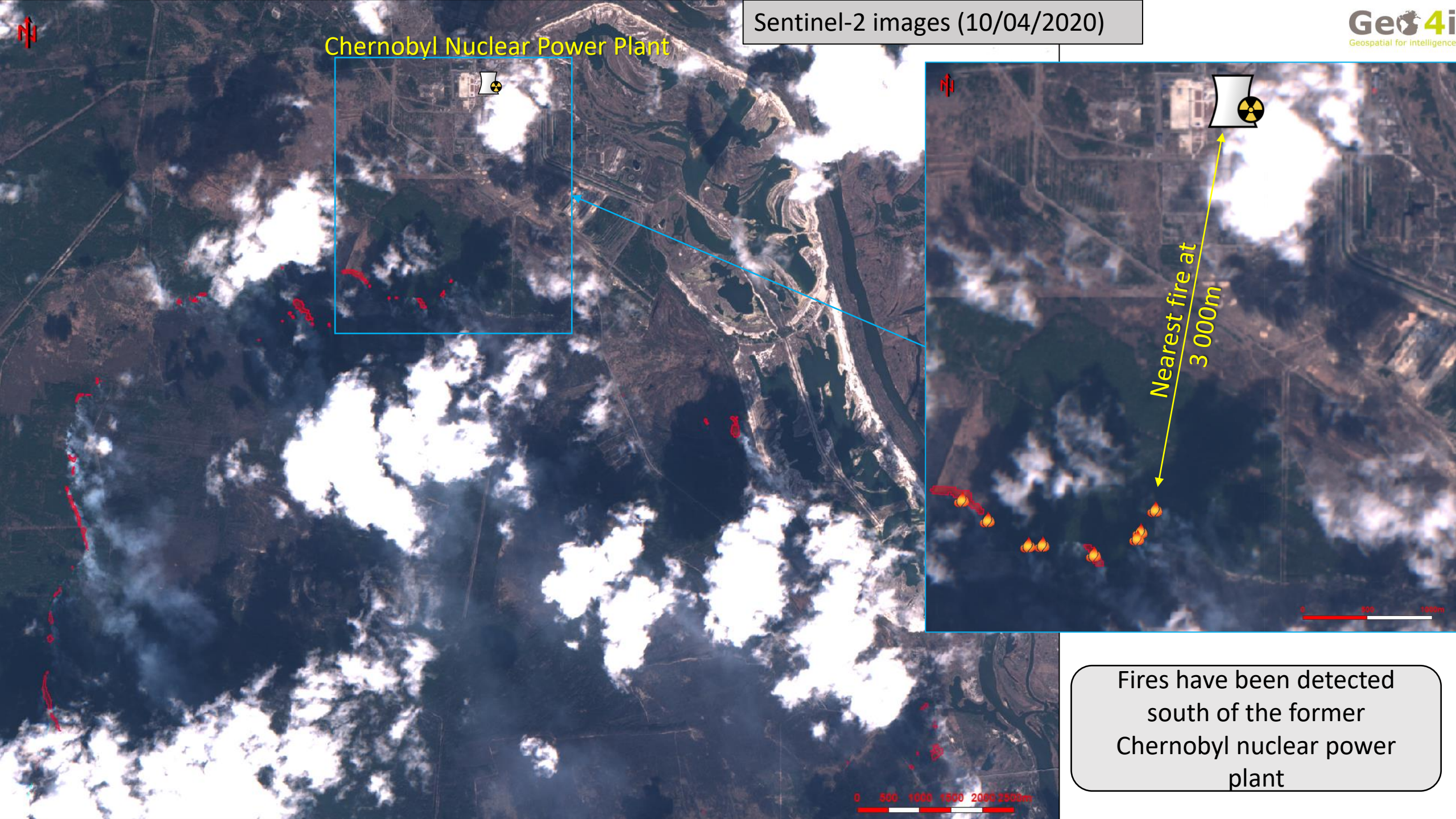
This processing chain is automatic and allows, in a few seconds, to extract the thermal activity on an area defined by the user.

The data used are Sentinel 2 images from the Copernicus constellation.

An IRSN article aims to be reassuring about the radioactive fallout on France.

[https://www.irsn.fr/FR/Actualites\\_presse/Actualites/Pages/20200415\\_NI-Tchernobyl-ukraine-Incendie-zone-exclusion-impacts-possibles.aspx#.XpheP8gzaM9](https://www.irsn.fr/FR/Actualites_presse/Actualites/Pages/20200415_NI-Tchernobyl-ukraine-Incendie-zone-exclusion-impacts-possibles.aspx#.XpheP8gzaM9)

### Chernobyl Nuclear Power Plant



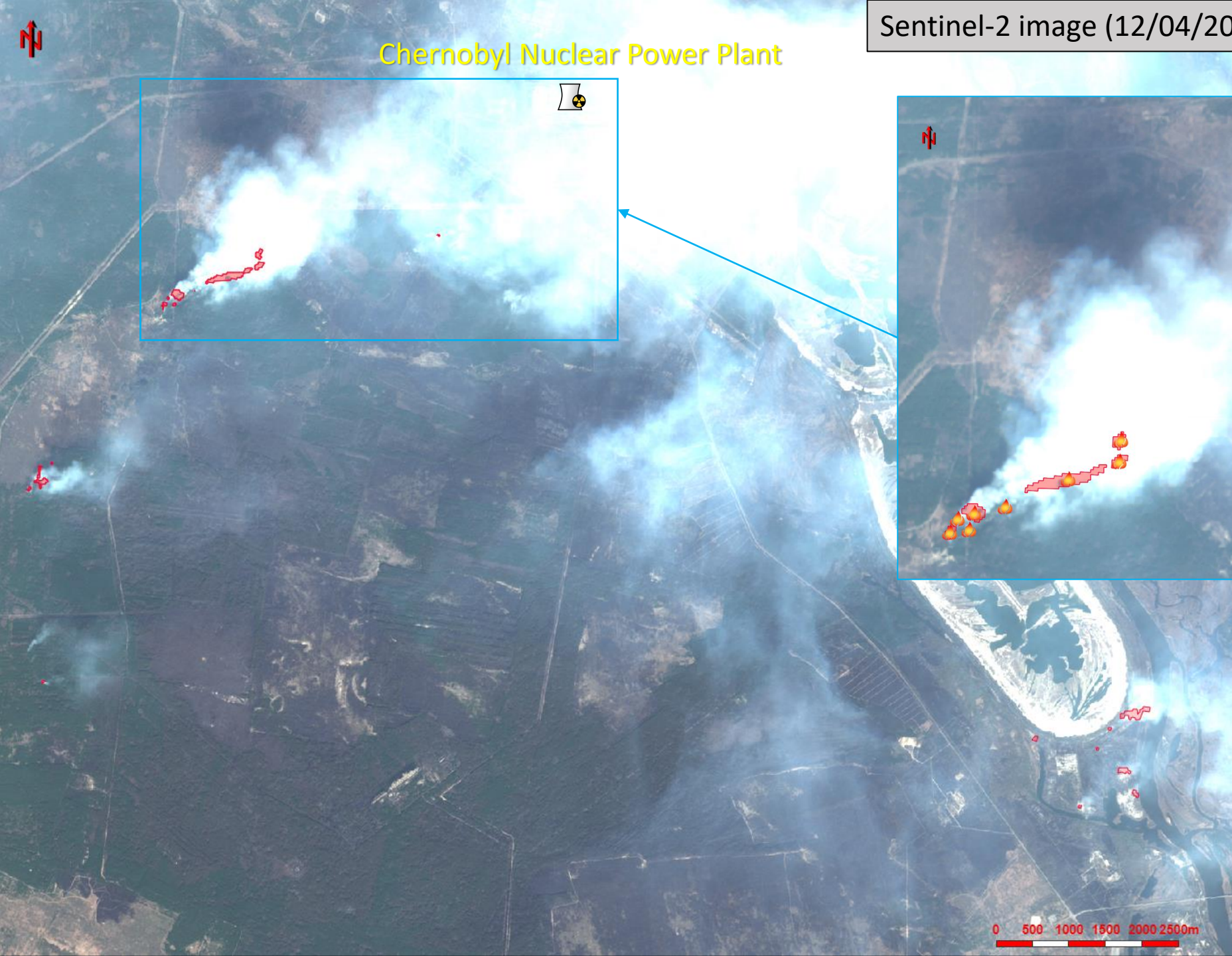
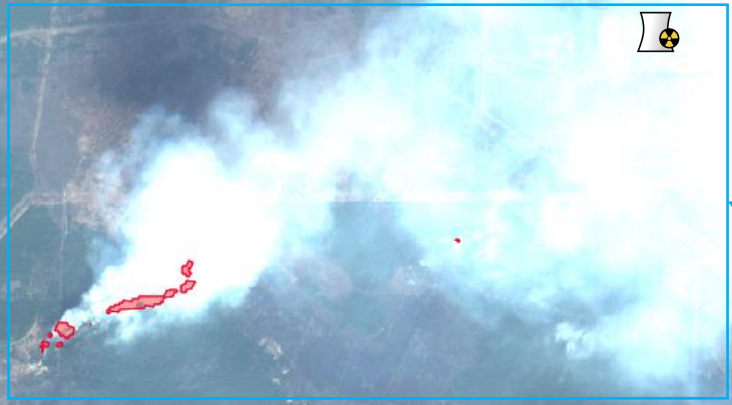
Fires have been detected south of the former Chernobyl nuclear power plant

0 500 1000 1500 2000 2500m



# Chernobyl Nuclear Power Plant

Sentinel-2 image (12/04/2020)

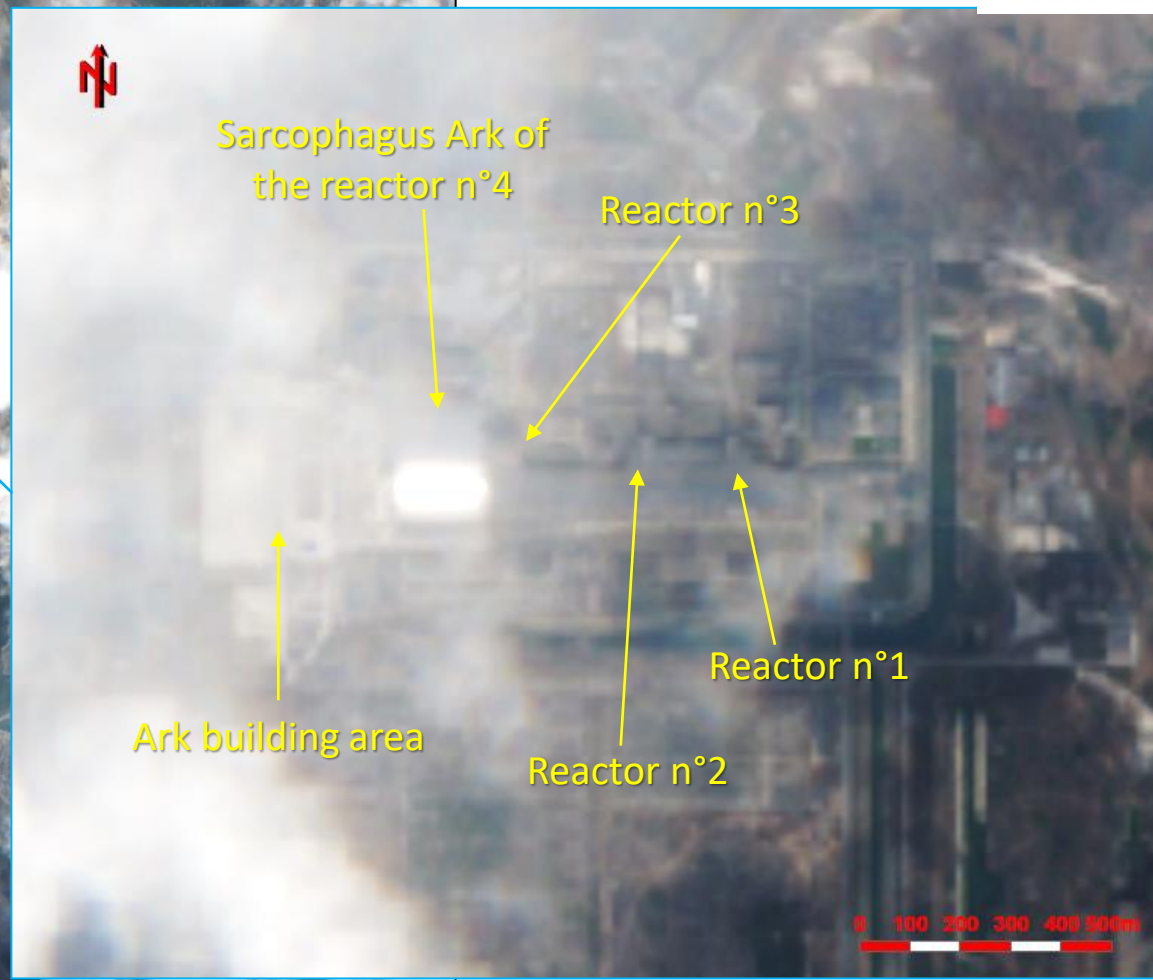


Fires have been detected. They moved southwest from the old Chernobyl nuclear power plant.



# Chernobyl Nuclear Power Plant

Sentinel-2 image (15/04/2020)



No fire was detected. It seems it have been put out.

0 500 1000 1500 2000 2500m